



When your health is involved, it's good to know the best place to go is the closest place to home.

OUR LOCATIONS



Marshall Medical Center North

8000 Alabama Highway 69 • Guntersville, AL 35976

Marshall Medical Center South

2505 US Highway 431 • Boaz, AL 35957

Marshall Cancer Care Center

11491 US Highway 431 • Albertville, AL 35950

Marshall Professional Center

11491 US Highway 431 • Albertville, AL 35950

Therapy & Sports Rehab

4198 US Highway 431 • Albertville, AL 35950

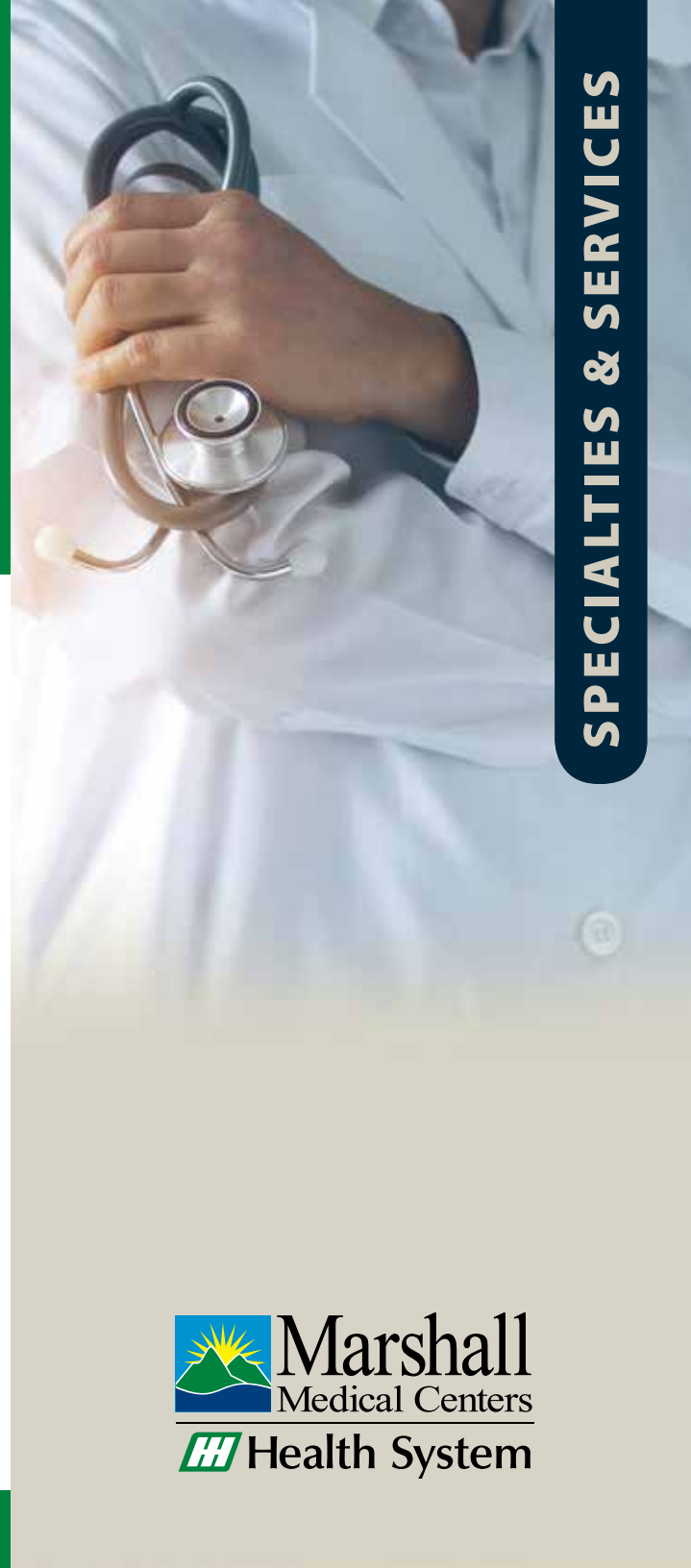
For detailed information on a specific service or facility please visit mmcenters.com or call 256.571.8000 (256.753.8000 for Arab area residents).

Marshall North and Marshall South are Voluntarily Accredited by the Joint Commission on the Accreditation of Healthcare Organizations.



Visit us at mmcenters.com

MMC125 4/20



SPECIALTIES & SERVICES

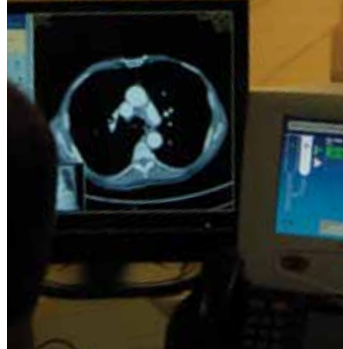


Sometimes healthcare choices can seem overwhelming. That's why we give you so many reasons to choose the convenience of Marshall Medical.

Sometimes life takes one of those unexpected turns that means a trip to the doctor, or even the hospital. When that happens, it's good to know you can turn to Marshall Medical for the very best care. From the latest technology to caring professionals, Marshall Medical offers a level of expertise that might surprise you. For example, state-of-the-art imaging capabilities such as PET/CT mean quicker and more accurate diagnosis. And advanced non-invasive surgical techniques provide better results and faster healing. Thanks to continuous investment and a commitment to excellence, Marshall Medical stays on the leading edge of healthcare services. That gives you a confident edge when it comes to good health, and another reason to choose the convenience of Marshall Medical Centers.

Our Specialties.

- | | |
|--------------------|---------------------|
| Anesthesiology | Ophthalmology |
| Bariatric Surgery | Orthopedic Surgery |
| Cardiology | Otolaryngology |
| Dermatology | Palliative Medicine |
| Emergency Medicine | Pathology |
| Family Medicine | Pediatrics |
| Gastroenterology | Psychiatry |
| General Surgery | Pulmonology |
| Gynecology | Radiation Oncology |
| Hematology | Radiology |
| Internal Medicine | Rheumatology |
| Medical Oncology | Urology |
| Neurology | Vascular Surgery |
| Obstetrics | |



Our Services.

With facilities conveniently located across Marshall County, we deliver an extensive offering of healthcare services close to home. Here's a partial list of the reasons Marshall Medical is the right choice for you:

- | | |
|--|---|
| 24-Hour Emergency Care | Home Medical Equipment |
| Bariatric Surgery | Interventional Cardiology |
| Behavioral Health | Labor & Delivery
<i>(LDRP Rooms - Labor, Delivery, Recovery and Post-Partum)</i> |
| Best Start | Massage Therapy |
| Cancer Care Center | Pain Clinic |
| Cardiac Rehabilitation | Physical Therapy |
| Care Coordination | Pulmonary Rehab |
| Community Education | Respiratory Therapy |
| Diabetes Education | Senior Services |
| Diagnostic Services
<i>(MRI, CT, PET/CT, Mammography, Bone Density Testing, Ultrasound, Nuclear Medicine)</i> | Sleep Disorders Center |
| Endoscopic Suite
<i>(Including Gastrointestinal and Bronchoscopic Procedures)</i> | Surgery Services
<i>(Inpatient and Outpatient)</i> |
| Food & Nutrition Services | Telemedicine |
| GoldCare 55+ | Wellness & Fitness Programs |
| HealthyHer
<i>(Baby, Oh, Baby!, Smart Start, Women's Network)</i> | Women's Health Services |
| Home Health | Wound Healing Center |

All Marshall Medical facilities are located on tobacco-free campuses. Thank you for respecting the health of others.

